

# COMPANY PROFILE

**JFC ARABIA Ltd.**



# TABLE OF CONTENT



## **I. COMPANY OVERVIEW**

- **ABOUT US**
- **HISTORY**
- **ORGANIZATION CHART**
- **OFFICE & SHOP INFORMATION**
- **OWNED CERTIFICATION**

## **II. PRODUCTS**

- **FILTER & FLITER PACKAGE**
- **STRAINER**
- **COALESCER/SEPARATOR**
- **PIPING SPOOL/SPECIAL FITTING**

## **III. BUSINESS AREA**

- **REFERENCE LIST**
- **CUSTOMER LIST**

# I. COMPANY OVERVIEW



## • ABOUT US



**One of leading Korean Manufacturer**

**: Filtration & Piping Equipment  
(Filter PKG, Water treatment System,  
Filter, Strainer, Coalescer, Seperator  
Piping Spool) in all kinds of industrial  
application.**

**: 18 year experience  
(Established in 1999)**



**Saudi Salwa**  
**51%**

**One of multi business company In KSA**  
**- Joint Venture**

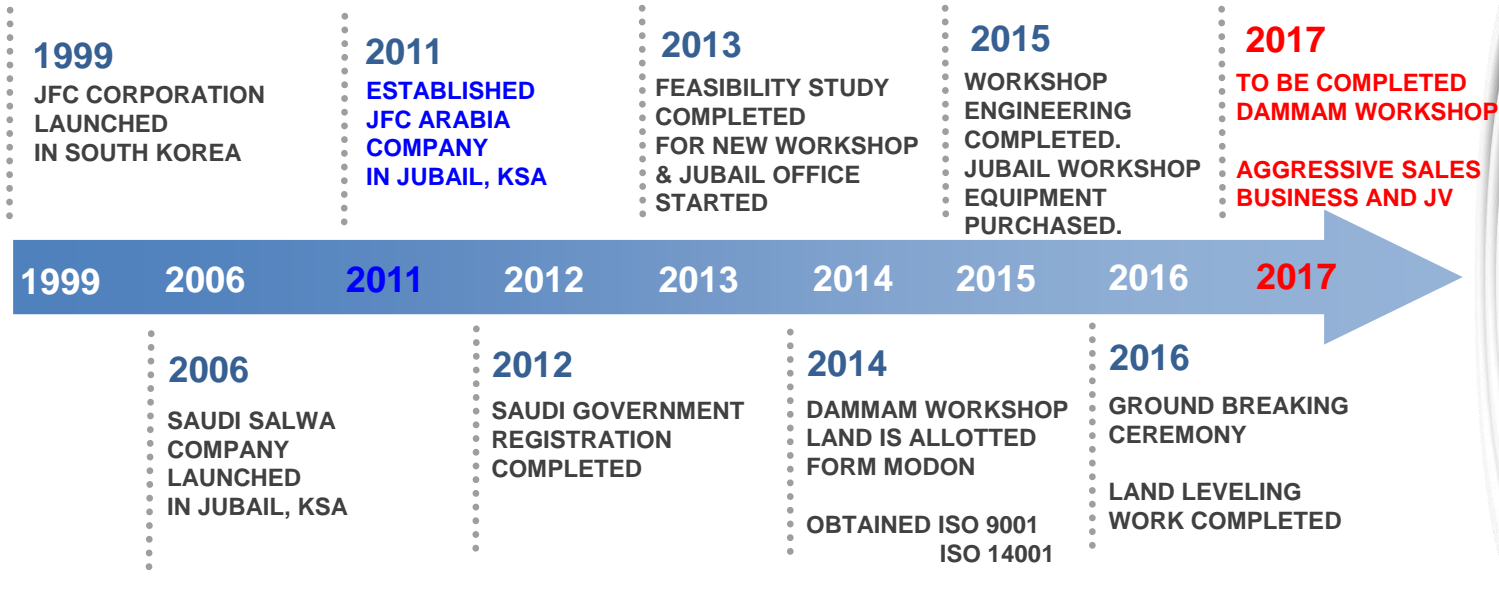


**- Authorized Dealer in KSA**



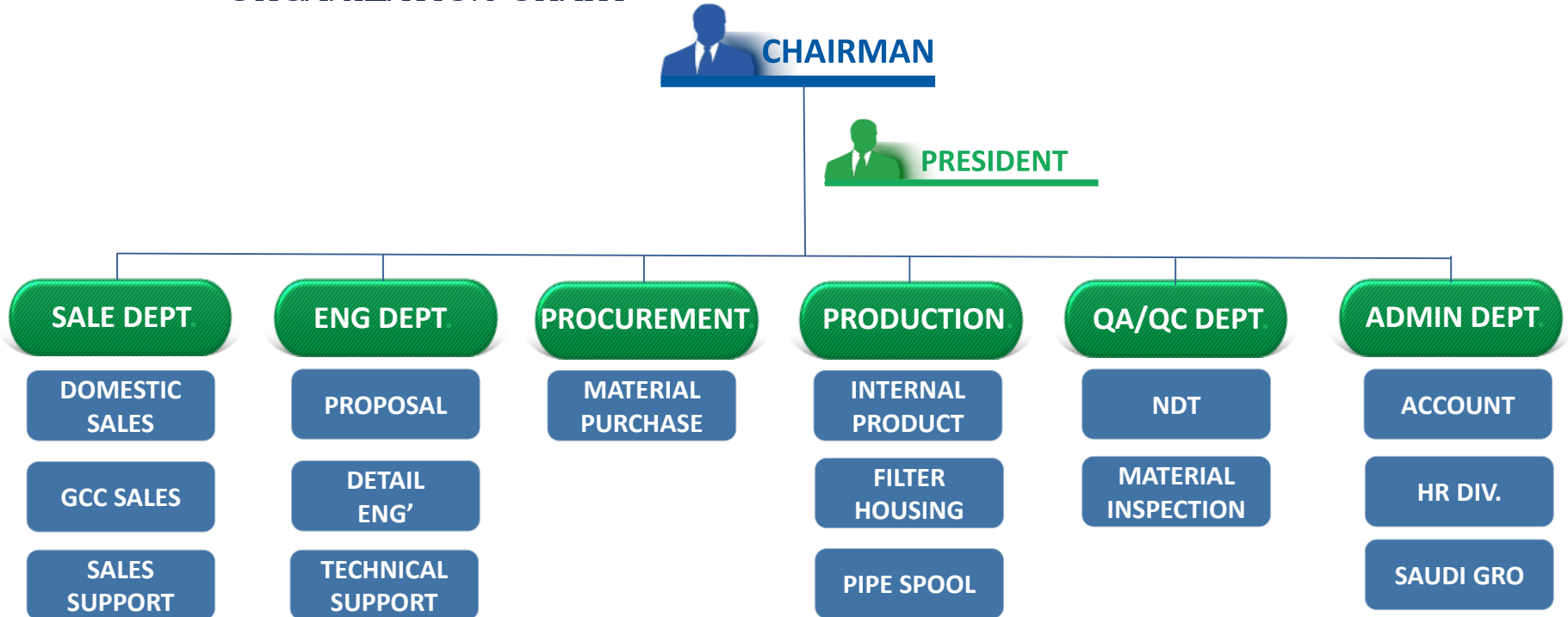
# I. COMPANY OVERVIEW

## • HISTORY



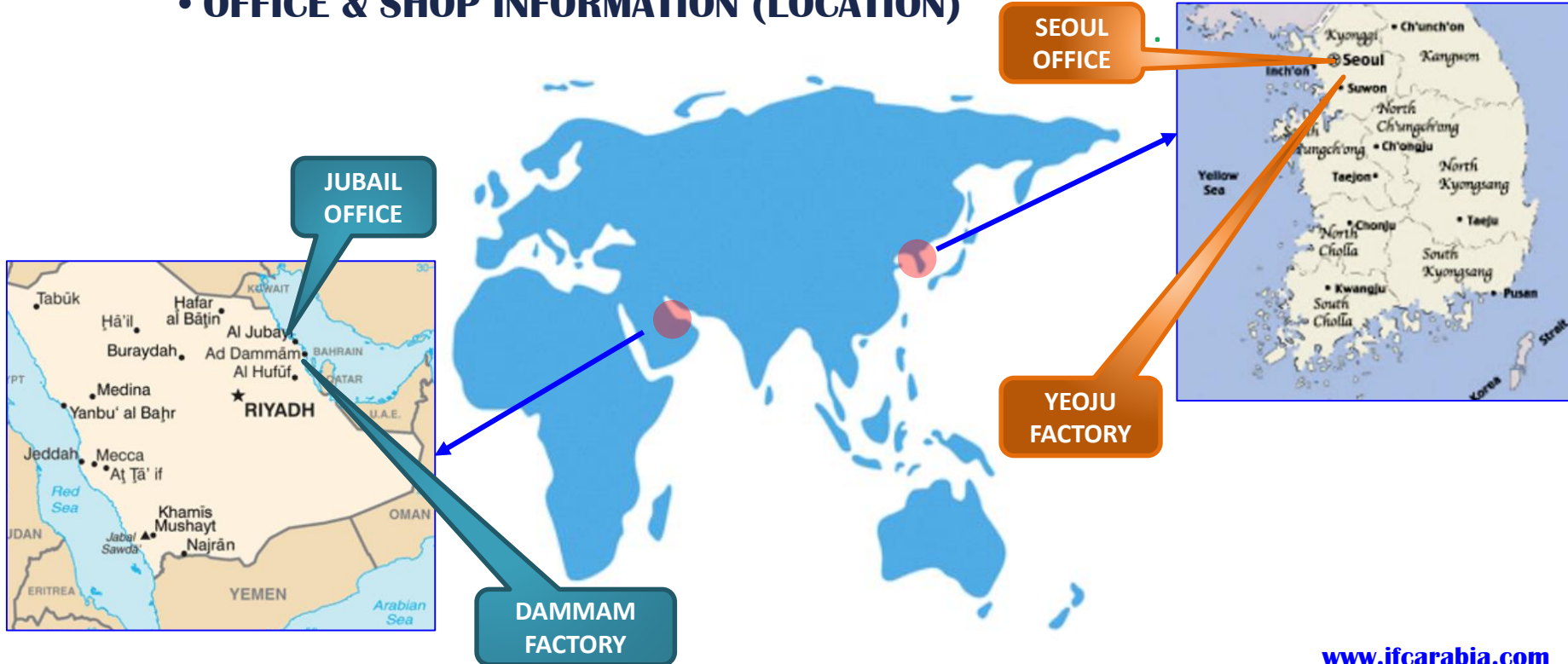
# I. COMPANY OVERVIEW

## • ORGANIZATION CHART



# I. COMPANY OVERVIEW

## • OFFICE & SHOP INFORMATION (LOCATION)



# I. COMPANY OVERVIEW

- **JUBAIL OFFICE & WORKSHOP FACILITY**

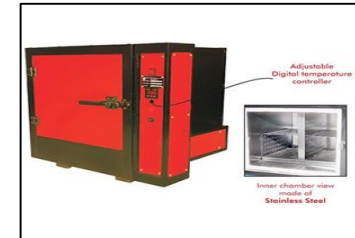




# I. COMPANY OVERVIEW

## • LIST OF OWNED MACHINERY FOR FABRICATION IN JUBAIL SHOP

NO	MACHINE DETAIL FOR GENERAL FABRICATION	Q'TY
1	AUTO WELDING MACHINE	3 EA
2	SPOT WELDING MACHINE (MODEL : PTE 228 & 823017)	5 EA
3	TURING ROLLER MACHINE & TURNING TABLE	2 EA
4	GAUGING MACHINE (MODEL : ORIGO ARC 810)	6 EA
5	CO2 WELDING MACHINE (MODEL : ORIGOMIG L405)	6 EA
6	INVERTER BASED WELDING MACHINE (MODEL : WARRIOR 400i)	15 EA
7	FORKLIFT	1 EA
8	PLASMA CUTTING MACHINE (MODEL : POWER MAX 105)	1 EA
9	FLAM CUTTING MACHINE (MODEL : IMP)	3 EA
10	PIPE GAS CUTTING MACHINE	3 EA
11	ELECTORDE OVEN	2 EA
12	DRILLING MACHINE	3 EA





# I. COMPANY OVERVIEW

## • LIST OF OWNED MACHINERY FOR BAG ELEMENT IN JUBAIL SHOP

NO	MACHINE DETAIL FOR BAG ELEMENT FABRICATION	Q'TY
1	THREE NEEDLES SEWING MACHINE (MODEL : #SM928-3N)	1 EA
2	TWO NEEDLE SHORT ARM SEWING MACHINE	1 EA
3	TWO NEEDLE FLAT BED SEWING MACHINE	1 EA
4	FILTER BOTTOM PUNCHING MACHINE	1 EA
5	SNAP BAND CUTTING MACHINE	1 EA
6	STRIP SLITTING MACHINE	1 EA
7	LONG ARM SEWING MACHINE	1 EA



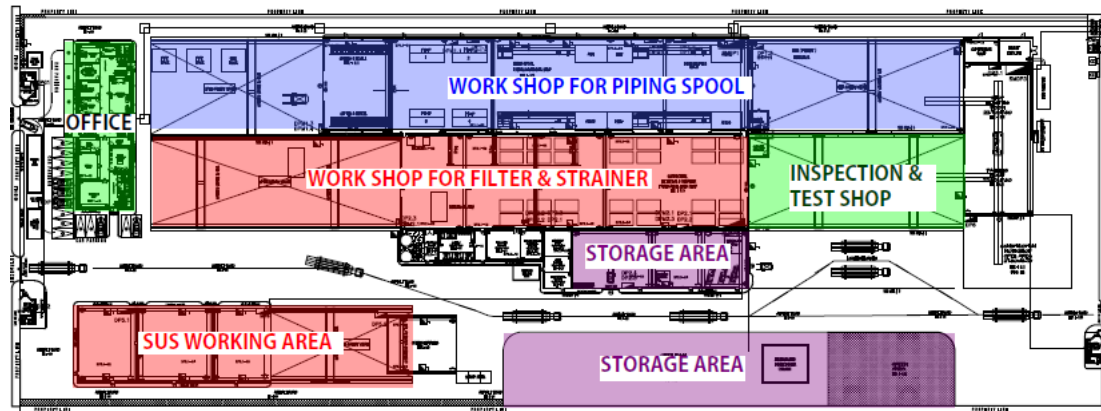
# I. COMPANY OVERVIEW

## • DAMMAM WORKSHOP (SITE PHOTO)



# I. COMPANY OVERVIEW

- DAMMAM WORKSHOP (ENGINEERING DRAWING)



# I. COMPANY OVERVIEW

## • KOREA OFFICE & WORKSHOP FACILITY



### **HEAD OFFICE & YEOJU FACTORY (13,000 m<sup>2</sup>)**

1318-20 Jangyeo-ro, Jeomdong-myeon, Yeosu-si,  
Gyeonggi-do, Korea

### **SEOUL OFFICE**

401, The One B/D, Sinbanpo-ro 45gil 9-4, Seocho-gu,  
Seoul, Korea

# I. COMPANY OVERVIEW

- **OWNED CERTIFICATION**

**ASME U, U2, S, PP**

**ISO 14001**

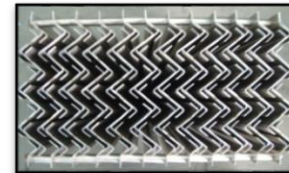
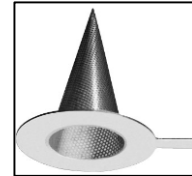
**ISO 9001**

**ISO 18001**



# II. PRODUCTS

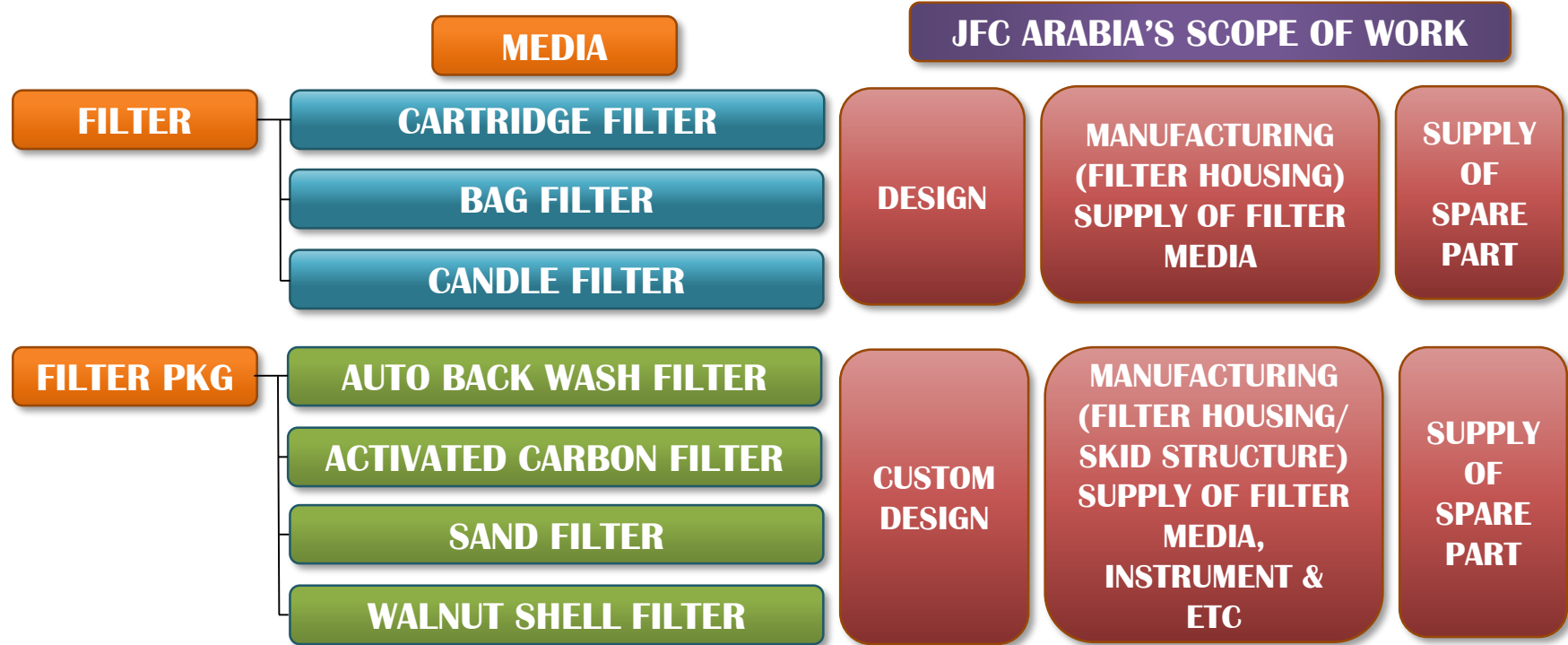
- **FILTER & FILTER PACKAGE**
- **BAG ELEMENT**
- **STRAINER**
- **COALESCER/SEPARATOR**
- **PRESSURE VESSEL/HEAT EXCHANGER**
- **PIPING SPOOL & FITTINGS**





# II. PRODUCTS

## • FILTER & FILTER PACKAGE



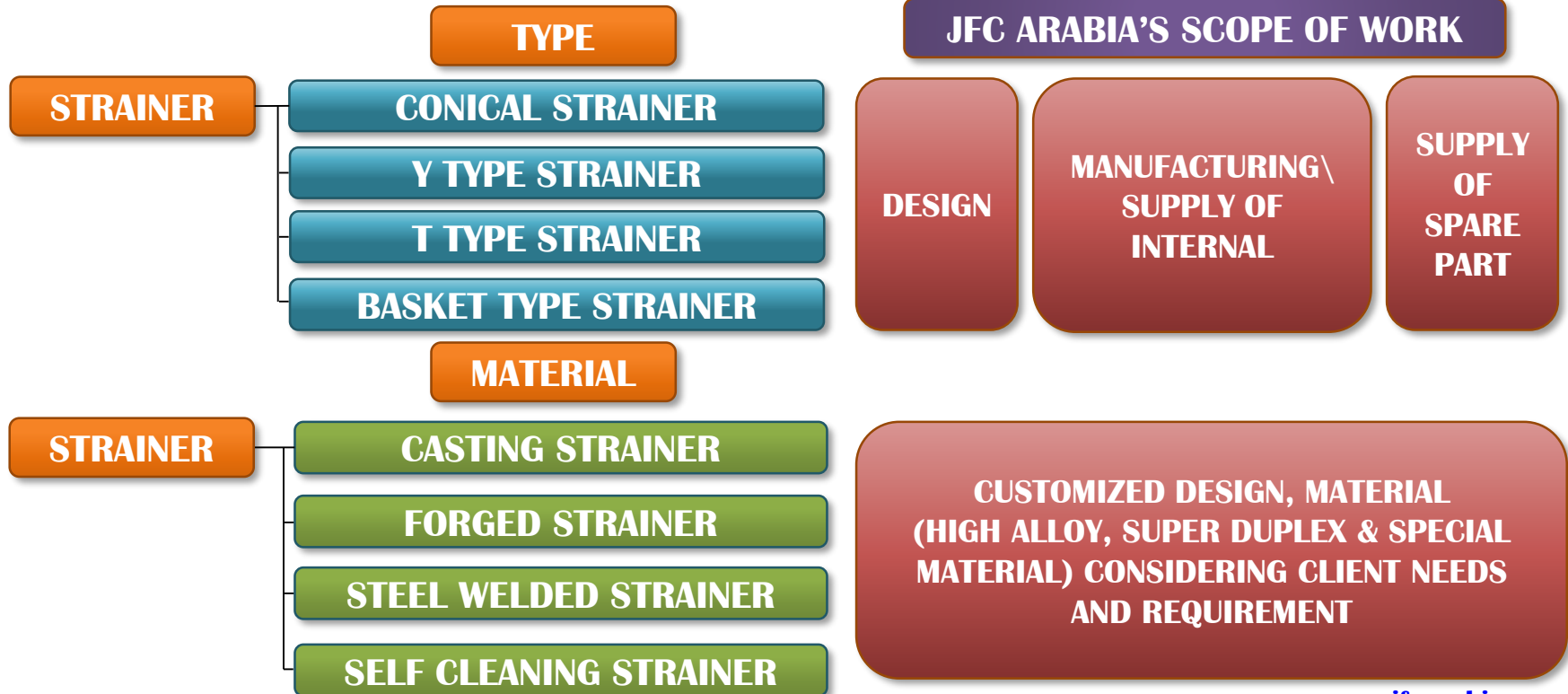
# II. PRODUCTS

- FILTER &  
FILTER PACKAGE**



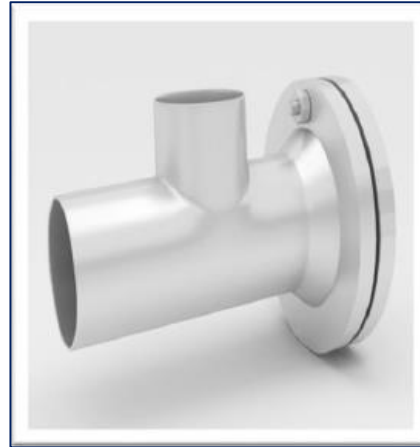
# II. PRODUCTS

## • STRAINER



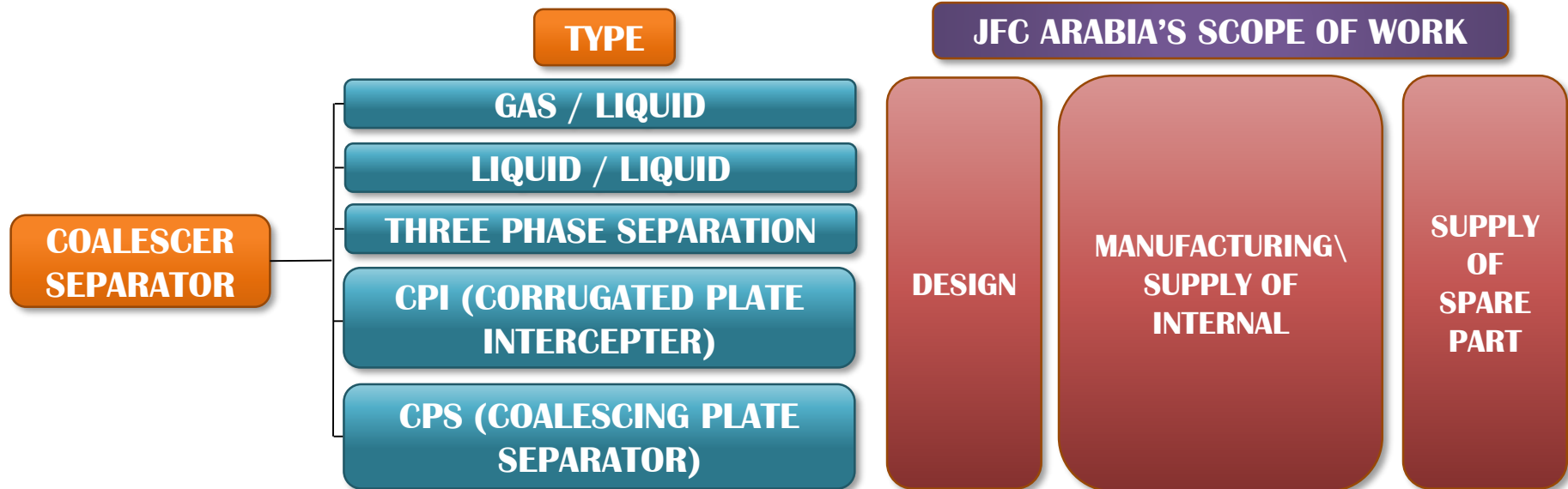
# II. PRODUCTS

- **STRAINER**



# II. PRODUCTS

## • COALESCER & SEPARATOR



CONSIDERING CLIENT REQUIREMENT, JFC ARABIA CAN PROVIDE THE CUSTOMIZED COALESCER WITH VARIOUS TYPE OF INTERNAL AND MATERIAL

# II. PRODUCTS

## • COALESCER & SEPARATOR



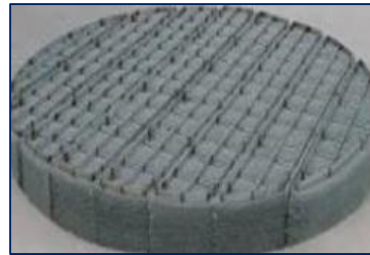
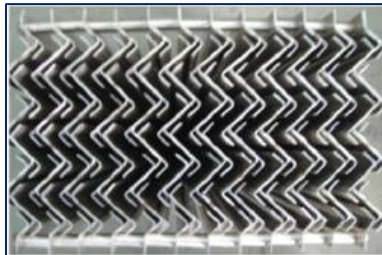
Particle Filter Coalescer



Fuel Gas Dust Filter Coalescer



Gas Separator





# II. PRODUCTS

## • PIPING SPOOL & SPECIAL FITTING

### AUTO WELDING MASTER SYSTEM



CUTTING

BEVELING

FIT UP

FOR YARD

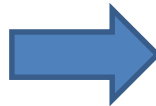
2<sup>ND</sup> AUTO WELDING

ROOT AUTO WELDING

#### MANUAL WELDING

1. LOW PRODUCTIVITY
2. HIGH DEFECT : Avg. 3~5%
3. HIGH COST
4. LACK OF EXPERIENCED WELDER

AFTER



APPLY  
AUTO WELDING  
MASTER SYSTEM

#### AUTO WELDING

1. HIGH PRODUCTIVITY : 30 Dia/Hr
2. LOW DEFECT : Max 0.5%
3. LOW COST
4. REPLACEMENT FOR EXPERIENCED WELDER

# II. PRODUCTS

- PIPING SPOOL & SPECIAL FITTING



# III. BUSINESS AREA

## • REFERENCE LIST FOR JFC ARABIA IN 2016

NO	CLIENT	COUNTRY	ITEM	AWARDED PRICE
1	TASNEE	KSA	BAG FILTER	3,000,000 SAR
2	TASNEE	KSA	STRAINER, O-RING	40,000 SAR
3	TASNEE	KSA	FILTER ELEMENT	80,000 SAR
4	SATORP	KSA	FILTER ELEMENT	370,000 SAR
5	SATORP	KSA	SPRING CUP	85,164 SAR
6	SABIC	KSA	FILTER ELEMENT	90,000 SAR
7	OLAYAN	KSA	FILTER	200,000 SAR
8	ADVANCED	KSA	STRAINER	130,000 SAR
9	BTC	KSA	STRAINER	20,000 SAR
10	CHEVRON	KSA	GASKET	60,000 SAR

# III. BUSINESS AREA

## • REFERENCE LIST FOR JFC

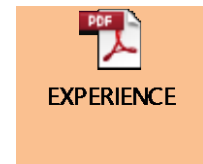
YEAR	CUSTOMER	CLIENT	SITE	PROJECT / ITEM	PRICE(USD)	Q'TY	UNIT
2016	SSCK / JFC ARABIA	TASNEE	KSA	SPC PDH/PP / FILTER BAS SPARE PARTS	\$131,220.00	842	EA
2016	SECL	TAKREER	U.A.E	TAKREER CBDC PJT / FILTER SPARE PARTS	\$321,946.00	61	EA
2016	SSCK / JFC ARABIA	SPC	K.S.A	SPC SADAF STYRENE / FILTERS	\$10,000.00	2	SETS
2016	INTEC	SK INCHEON CORP.	KOREA	STRAINERS	\$17,300.00	18	EA
2016	SHELL EASTERN	SHELL EASTERN	SINGAPORE	SHELL ECC / FILTER ELEMENT	\$75,750.00	57	EA
2016	SCG CHEMICAL	SCG CHEMICAL	THAILAND	SCG RTC / FILTER ELEMENT	\$22,700.00	26	EA
2016	SSCK / JFC ARABIA	ARAMCO	K.S.A	JERP#2 / SPARE PARTS	\$80,472.00	67	EA
2016	SSCK / JFC ARABIA	ARAMCO	K.S.A	SAUD ARAMCO RT DHT / STR ELEMENT	\$14,410.00	7	EA
2016	SSCK / JFC ARABIA	SABIC	K.S.A	IBN ZAHR PP-III / FILTERS	\$15,800.00	1	SET
2016	SSCK / JFC ARABIA	SABIC	K.S.A	AR-RAZI 5 / SPARE PARTS	\$12,430.00	25	EA
2016	QATAR PEARL GTL	QATAR PEARL GTL	QATAR	GTL&NGL / SPARE PARTS	\$25,602.00	175	EA
2016	PTTGC	PTTGC	THAILAND	PTT ARO2 / SPARE PARTS	\$51,300.00	130	EA
2016	PTTGC	PTTGC	THAILAND	PTTLNG LNG TERMINAL / STRAINER	\$35,000.00	10	EA

# III. BUSINESS AREA

## • REFERENCE LIST FOR JFC

YEAR	CUSTOMER	CLIENT	SITE	PROJECT / ITEM	PRICE(USD)	Q'TY	UNIT
2016	PT. PERTAMINA	PT. PERTAMINA	INDONESIA	SENORO / FILTER ELEMENT	\$270,320.00	64	EA
2016	NIEOC	NIEOC	IRAN	ESFAHAN REFINERY UPGRADING / STRAINER	\$237,000.00	87	EA
2016	FLOUR	MA'ADEN	K.S.A	MA'ADEN AMMONIA 2 / SPARE PARTS	\$23,072.00	3	EA
2016	SECL	LUKOIL	BOLIVIA	YFPB AMMONIA/UREA / FILTER ELEMENT	\$28,674.00	31	EA
2016	LINDE	LUKOIL	IRAQ	WEST QRUNA 2 / FILTER ELEMENT	\$76,580.00	176	EA
2016	NEOTECH	LOTTE CHEM.	KOREA	LOTTE LVSR / FILTERS	\$19,900.00	9	SETS
2016	TOYO ENG	INDORAMA	NIGERIA	IEFCL / SPARE PARTS	\$347,210.00	476	EA
2016	KPIC	KPIC	KOREA	STRAINERS	\$12,100.00	10	EA
2016	BTS	KOGAS	KOREA	KOGAS MEAM / FILTERS	\$15,000.00	2	SETS
2016	BTS	KOGAS	KOREA	KOGAS MEAM / STRAINERS	\$9,000.00	8	SETS
2016	NEOTECH	GS CALTEX	KOREA	SPARE PARTS	\$78,350.00	7	EA
2016	DOOSAN	TAEAN IGCC	KOREA	TAEAN IGCC / FILTER ELEMENT	\$10,510.00	46	EA
2016	OTK	OTK	KOREA	OTK ERGON / FILTERS	\$70,000.00	5	SETS

**TOTAL LIST**



# III. BUSINESS AREA

- JFC GLOBAL BUSINESS AREA

Covered GCC countries  
by JFC ARABIA



Covered USA, Malaysia,  
GCC & Iran by JFC



# III. BUSINESS AREA

## • CUSTOMER LIST

### Owner

### EPC



JFC ARABIA COMPANY LTD.

P.O Box 11774 Jubail Industrial City 3196,  
Kingdom of Saudi Arabia

Tel : +966-13-341-8453

Fax : +966-13-341-8354

E-mail : [info@jfcarabia.com](mailto:info@jfcarabia.com)

Web site : [www.jfcarabia.com](http://www.jfcarabia.com)